



## CMS PROFESSIONAL 2010

CMS Professional 2010 for Business Accounting, FUND and Point of Sale products include great new features with enhanced filtering, and internal and external reporting abilities that expand your power to retrieve valuable information and present that data in a format so that you can make intelligent decisions that affect your business success.

Our customers have been asking for these features now for some time. So we'll say it first – It's about time! Though the number of features for this release appears to be small, we feel they pack quite a punch in making your life easier to review and find data so that your business will run more efficiently and effectively. Our customers will now be able to:

- Review at-a-glance data on your business financial health and drill-down into that data to understand the bottom line
- Export reports more easily to Excel (.CSV)
- Effectively narrow your lookups when searching for a stock item or customer
- A direct link to order your forms & supplies online

### INTRODUCING:

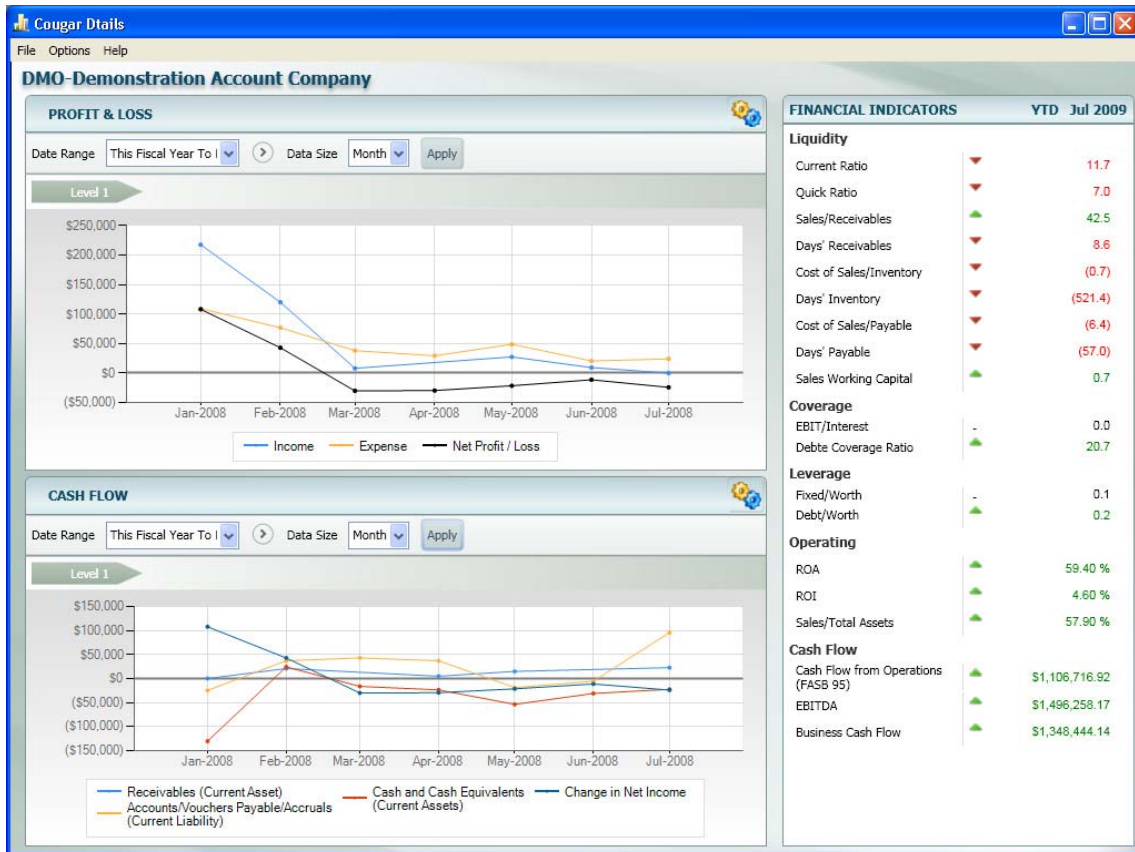
**Cougar Dtails, A Financial Dashboard** – Our newest product is an at-a-glance application that provides you with the ability to gain insight into your business data and financial health. This financial dashboard offers a business owner, CPA or CFO a quick and easy visual perspective of a company's financial health so that smart business decisions can be made.

This financial dashboard allows a business owner to explore anomalies and get behind those numbers so they can examine what's going into that number because it easily connects to their General Ledger data. This financial dashboard presents the data in a way that will aid day-to-day operations and trending over periods for effective decision making.

Users are presented with 3 different financial viewpoints from which they can select default preferences in data viewed on a regular basis, or customize what they see each time. Security measures are also in place so that the Administrator can determine which employees have access to this application. This new application feature also has the ability to look at all this data against your budgets.

### The three dashboard views:

- The **Profit & Loss** view (**Revenue & Expense** for nonprofit users) will illustrate income (revenue) and expenses over a period of time, and a look at net profit/loss.
- The **Cash Flow** view shows the relationship between cash and liabilities, which can help businesses, make good cash management decisions.
- The **Financial Indicators** show at-a-glance how a company is performing compared to the previous year.



## New Global Features:

**Export Reports to a CSV File:** This feature is a direct result from a custom modification and a continued request from many customers— easily export report data to a CSV file that can be viewed in Microsoft® Excel or any spreadsheet that can open a CSV file. Now a user can more easily analyze certain reports by creating graphs, or import into other systems. This feature is included with the following reports\*:

- **Accounts Receivable:** Aged Analysis (detailed)
- **Bank Reconciliation:** Bank Register (single line)
- **General Ledger:** Audit Trail (single line), Trial Balance
- **Job Cost:** Billing History (detailed and summary)
- **Order Entry:** Sales History (detailed and summary)
- **Point of Sale:** Sales History (detailed and summary)

\* Additional reports will be available later.

**A Contains Filter Option in Lookups –** Save yourself the time and headache when searching for a specific inventory item or a customer, and you don't remember the specific details or spelling or number of the item/name you originally entered into the database. Now all you need are either a few letters, numbers, or phrases of what it is you're looking for in order to narrow your search.

Filter look up information using the Contains option. Just check the Contains box so that you can narrow your search to locate items by inputting only certain characters or phrases.

**AP Vendor Lookup**

Search for an item by typing characters into the "Search for" and/or "Contains" boxes below.  
Use the "Contains" option to filter the records for only the entries that include the string of characters in the field specified by the "Search for" box.

Sort By  Search for Vendor Number

Contains

Vendor Number	Vendor Name	Address	City	State	Phone	Total Due
OFFICE SUPPLY INC	Office Supply Incorporated	1584 west 1 st	Boise	ID	208-375-3312	\$ 0.00
PAPER SUPPLY	Paper Supply Warehouse	500 E. Folwer Road	Homedale	ID	208-345-5544	\$ 0.00

Use the "Sort By" button or ALT+F5 to cycle through the various search, sort, and filter options.

## What's Next?

- The ability to export more reports to a CSV file (available in upcoming smart patches.)
- Upgrade to Denali and easily convert your CMS Professional 2010 data (available in upcoming smart patches.)
- More dashboards! How about A Sales Dashboard that reviews your sales history data? Or A Financial Dashboard for Denali? (Dashboard ideas that will be available in upcoming upgrade releases.)
- Want to export report data not included with this release now? Or a dashboard tailored to your company? Ask your sales executive about our Custom Service Department and customize these new features now!

**Call to Order our Newest Release TODAY!**  
**800.388.3038**